

ONLINE COURSE

FUNDAMENTALS OF IMPACT INVESTING

Created in partnership with



With the contributions from



“FOREWORD

Dear reader,

Thank you for your interest in the Fundamentals of Impact Investing course! The course has been designed in close partnership with TIIME and industry leaders to equip you with the essential knowledge and skills you need to engage in impact investing as investor, entrepreneur or consultant.

In this brochure you will find insights into the content and scope of the course. If you have any questions about it, do not hesitate in reaching out to us at support@efiko.academy.

We look forward to seeing you join the course and our fast-growing community of impact professionals!

The Efiko Academy Team.





THE COURSE

PURPOSE

Impact investing is set to become the norm for the financial sector. This trend calls for investment professionals and entrepreneurs equipped with core knowledge and skills to excel at investing or raising capital to achieve positive impact alongside financial returns. This course will help you gain a robust understanding of the impact finance ecosystem, its unique practices along the investment process and the key trends shaping its future.



— COURSE LEARNING GOALS



By the end of the course, you should be able to:

01

Explain the driving forces fueling the rise of impact investing and the main obstacles

02

Recognise the diversity of impact investors and investment strategies

03

Learn best practices and expectations in the impact investment process

04

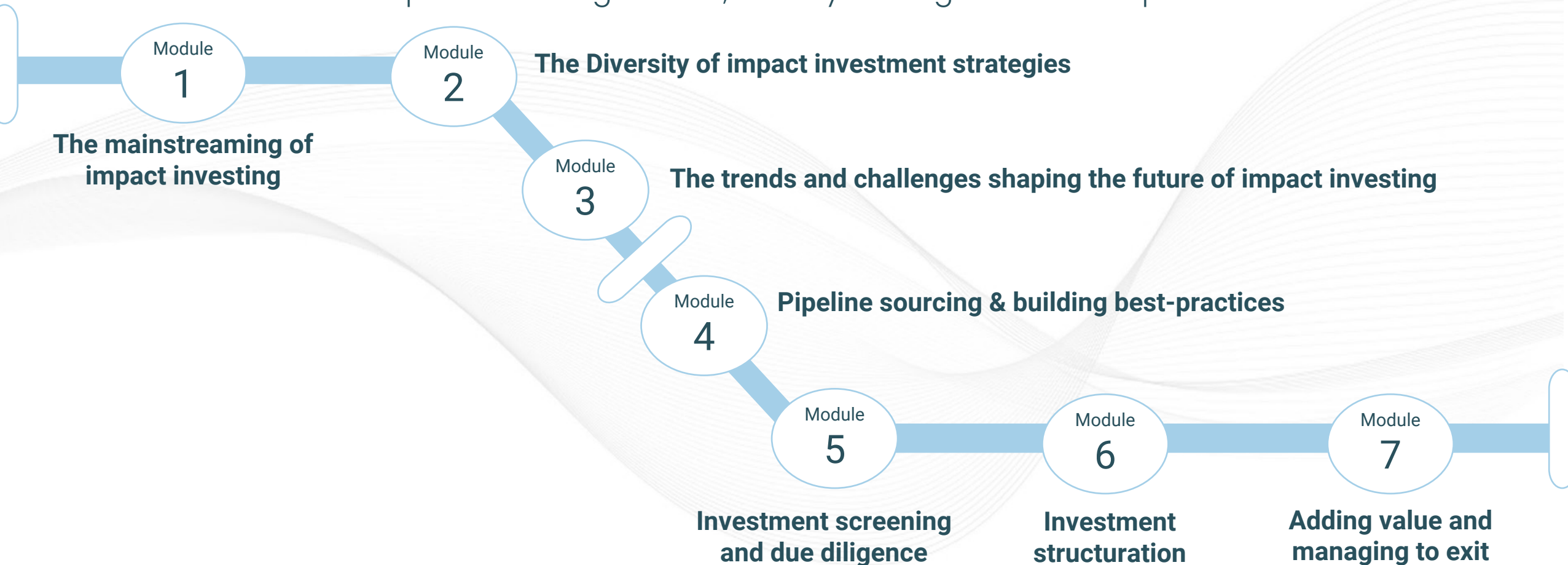
Analyse an investment opportunity through the lens of an impact investor

05

Get practical advice from leading investors and entrepreneurs

— COURSE STRUCTURE

The course is structured around seven modules that together provide a comprehensive overview of the impact investing market, the key strategies and core practices.



— LEARNING OPTIONS

AUTONOMOUS LEARNER

The learning experience that fits your busy working schedule and allows you to learn at your own pace from wherever you are. Immediately access a neat online course structured around bite-sized videos and a wealth of practical resources to advance your impact investing know-how and skills.

OR

SOCIAL LEARNER

Spice up your learning journey by blending the online course with a set of live interactive sessions to meet with like-minded peers and share experiences with the group and the trainers. You will get a chance to take part in a team-based role play to analyse and structure an investment for a real social enterprise.

— COURSE FEATURES

Delve into an engaging learning experience providing you with a wealth of insights, exercises and resources to confidently build your knowledge and skills



Bite-sized
video lessons



Quiz questions,
articles & templates



Practical insights
from experts



Access to community
platform



Case-study based
investment analysis



Live Q&A with
expert trainer



Meet with like-
minded peers



Live session recordings

— LEARNER PROFILE

This course is designed for professionals eager to engage in or transition into impact investing as well as entrepreneurs seeking to develop an understanding of the impact investment ecosystem and core practices. This course will be particularly relevant for freshly recruited professionals who have joined a public or private sustainable or impact fund, a family office or a foundation. It will also be meaningful to entrepreneurs and intermediaries such as advisors, coaches and teachers.



PRICING

— COURSE PRICE

AUTONOMOUS LEARNER

- 6 hours of on-demand online course materials
- 40+ videos and 20+ exercises
- 10+ insights from leading practitioners
- Unlimited access to the platform for a full year
- Certificate of Completion after final exam
- 15-day money-back guarantee

€189

VAT included

Financial aid? You can apply [here](#)



— COURSE PRICE

SOCIAL LEARNER PACKAGE

Everything in the Autonomous package **PLUS**

- 3x 90 minutes sessions guided by our experienced trainer
- Meet and share experiences with 10+ like-minded peers
- Role playing exercises on executing an impact investment
- Answers to your burning questions
- Access to recordings available at any time

€480

VAT included

Financial aid? You can apply [here](#)



— COURSE PRICE

IN-HOUSE TEAM TRAINING

The course can be booked for multiple team members, either in self-paced or hybrid learning modes. For self-paced team learning we provide dedicated learner support with learning plans and goals. For hybrid team learning, we additionally offer the option to deliver in-person training and tailoring the live session contents and schedule to your needs and preference. Contact us if you wish to request more information to further explore this opportunity!



TRAINERS

— TRAINERS & PARTNERS

We developed this course in partnership with TIIME, a leading advocacy, advisory and education provider focused on Impact Investing.



I am the Co-founder of TIIME, as well as their portfolio manager, an active member of the TONIC community and advisor to several EU impact funds. I am currently teaching at various Universities over Europe on the topic of impact investing, gender-smart investing and social entrepreneurship

CÉCILE SEVRAIN
Co-founder and Portfolio
Manager at TIIME



— TRAINERS & PARTNERS



COURSE CONTRIBUTORS:

The online course is enriched with the insights of leading impact investment practitioners and social entrepreneurs. Their insights shed light on typical challenges and practical ways to overcome them, based on real life experiences.



— ORGANISED BY EFIKO ACADEMY

The one-stop learning hub for green and social impact skills.

OUR MISSION

Our mission is to train as many people as possible on green and social impact skills. We do so by designing courses with leading experts and delivering them in ways that are both accessible and inclusive.

500+ Impact-driven professionals trained in just over two years

60+ Net Promoter Score achieved across our training catalogue

50+ partners and practitioners have contributed to our courses

These organisations trust us to train their teams:



— CONTACT

Reach out to us if you have any further questions



Timothy Lambert
support@efiko.academy
[+32 475 37 30 29](tel:+32475373029)



Interested in an in-house training?
Book a 30min intro by [clicking here](#).



Ready to sign up to the course?
Checkout [here!](#)

